

NATURAL HAIRS & FURS

A wide assortment of fur and hair used for dubbing and tailing. All furs are sold on tanned hide by the piece.

Moose Mane

Order No. 620-405 Price: \$1.69

Raccoon

Order No. 620-407 ... Price: \$1.19

Gray Fox

Order No. 620-408 Price: \$1.69

Red Fox

Order No. 620-412 ... Price: \$1.59

Moose Body Hair

Order No. 620-406... Price: \$1.69

Badger Fur

Order No. 620-403 Price: \$1.69

Australian Opossum

Order No. 620-401 ... Price: \$1.49

Beaver Fur

Order No. 620-404 Price: \$1.49

Black Bear Fur

Order No. 620-417 ... Price: \$1.69

Muskrat Fur

Order No. 620-402 ... Price: \$1.49

Elk Body Hair

COLORS:
Light Natural (000) Dark Natural (001)
Order No. 620-416- ... Price: \$2.25

Calf Body Hair

Natural white color.
Order No. 620-415 ... Price: \$1.89

Hare's Mask with Ears

COLORS: Olive (024), Natural Brown (025).
Order No. 620-400- Price \$3.29



MARC PETITJEAN'S MAGIC HEAD

The magic head will add a swimming action and undulation to any swimming style nymphs, eggs and attractor patterns. Recommended for use with the Ultra suede magic tails. Order (001) for hook sizes 2-8, (002) for hook sizes 4-2/0.
Order No. 650-200 Price: \$6.59/6 pack



ULTRA SUEDE MAGIC TAILS

This tail in combination with the Magic Head has been a very productive pattern for a multitude of fish species. Tails can be easily colored with permanent markers to "match the hatch". 6 per pack.
COLORS: White (002) and Minnow Gray (026).
Order No. Hook Size Size Price
650-192- #2-6 Medium \$3.99
650-193- #2 and larger Large 3.99



NYPH STRETCH SKIN

Use to form bodies and wing cases on stonefly nymph and crayfish patterns. 2 yards per pack.
COLORS:
Black (001) Light Brown (025) Olive (024)
Natural Latex (003) Caddis Green (009)
Order No. 650-173- Price: \$2.99/pack



SPARKLE BRAID

This bright mylar material is the main ingredient in many muddler and saltwater patterns. 6 yds. per card.
COLORS:
Red (008) Green (009)
Royal Blue (045) Gold (027)
Silver (028) Pearl (007) Flo. Orange (018)
Rainbow (078) Chartreuse (004) Flo. Yellow (019)
Tan Pearl (020) Olive Pearl (024) Flo. Pink (010)
Order No. 620-226- Price: \$1.49



Greg Senyo - Guide

"Jann's Netcraft is my one stop shop for my fly tying needs. Their staff is always helpful"

VINYL BODY MATERIAL

A nymph body material perfect for segmented bodies. Stretches down to the size you want.



HALF ROUND COLORS:
Black (001) Brown (025) Clear (040)
Red (008) Olive (024) Yellow (003)

Order No. 620-311- Price: \$1.49 ea.

THIN SKIN



This skin is transparent with a matte finish on one side and a shiny finish on the other. Stretchable, so it makes bodies easy to form. Used on scuds, shrimp, crayfish and sowbugs. Natural color allows you to color to taste.
Order No. 620-152-000 Price: \$2.35

LEECH YARN

Long Angora hair twisted into yarn. Good for streamer and nymph bodies. 15' card.
COLORS:
Black (001) Brown (025) Olive (024)
Purple (006) White (002) Chartreuse (004)
Pink (010) Orange (021)
Order No. 630-412- Price: \$1.59

SWISS STRAW

Also known as Raffia. Used for making the scaled bodies on crayfish and nymph patterns. 15' per card.
COLORS:
Black (001) Cream (023) Orange (021)
Olive (024) Green (009) Brown (025)
Order No. 620-300- Price: \$1.49

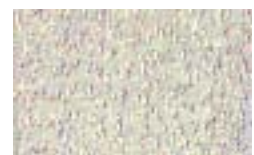
(008) (001) (379) (378)
(019) (016) (002) (024)

PSEUDO MARABOU

The ultimate synthetic substitute for marabou. Very easy to tie and keeps it's shape when fished. Can be used for tails, wings, bodies, collars and veils. You can tie dozens of flies from a pack. Instructions included. Please specify color when ordering.
COLORS:
Black (001) Minnow Blue (378) Minnow Gray (379)
Olive (024) White (002) Green Chartreuse (016)
Flo. Yellow (019) Red (008)
Order No. 650-183- Price: \$3.49

OPAL MIRAGE ACCENT

Similar to Flashabou Accent but with unique reflective qualities of Mirage color shifting technology. 12" length.
Order No. 635-104 Price: \$4.09



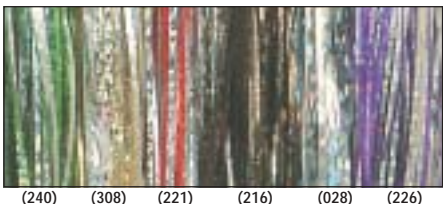


GLOW FLASHABOU

A stranded plastic-like material that glows-in-the-dark when exposed to light. 8" length, about 375 strands.

COLORS: White (002) Pink (010)
Orange (021) Chartreuse (004)

Order No. 635-102- Price: \$3.85



HOLOGRAPHIC FLY FIBER

Two tone holographic fiber reflects light with a 3D effect. Silver on one side, color on the other. Wider cut and stiffer than regular Flashabou. 8" length.

COLORS: Silver/Silver (028) Silver/Gold (308)
Silver/Green (240) Silver/Red (221)
Silver/Black (216) Silver/Purple (226)

Order No. 635-110- Price: \$3.39



DYED PEARL FLASHABOU

Pearl finish imitates baitfish. 8" length.

COLORS:
Olive (024) Flo. Yellow (019) Purple (006)
Light Blue (030) Orange (018) Lavender (045)
Chartreuse (004)

Order No. 635-107- Price: \$3.85

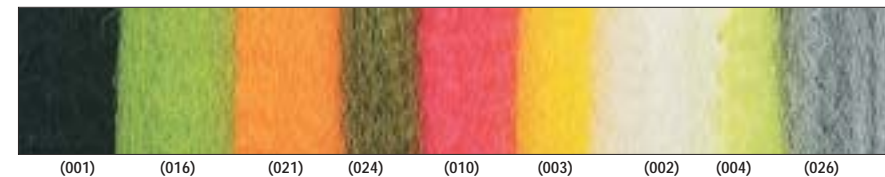


HOLOGRAPHIC FLASHABOU

Reflects light with a shimmering 3D effect. 8" length, about 375 strands.

COLORS: Silver (028) Gold (027) Green (009)
Blue (045) Fuchsia (035) Black (001) Rainbow (078)

Order No. 635-106- Price: \$3.85



STRUNG FUZZY FIBER

Use this ultrafine soft non-absorbent material to create heads, wings and bodies on all types of flies. Strung for ease of use. 12" length.

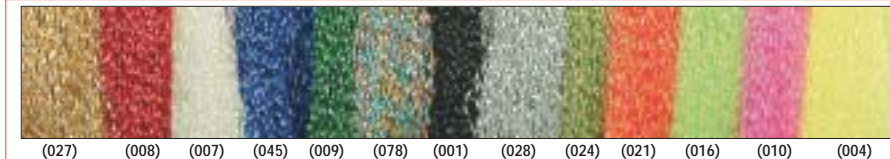


FLASHABOU

Used as a dressing for flies, jigs, and spinnerbaits. Each 8" length has over 1000 strands of .010" mylar.

COLORS:
Silver (028) Gold (027) Blue (045) Red (008) Purple Chub (702) Electric Blue (053)
Black (001) Purple (006) Junebug (087) Bullfrog (262) Fountain Blue (418) Rainbow (078)
Fuchsia (035) Bronze (042) Lime Green (049) Copper (043) Ocean Green(434) Kelly Green (009)
Grape (416) Ice Blue (204) Pearl (007) Pink (010) Perch (270) Salt & Pepper (076)

Order No. 635-105- Price: \$3.39



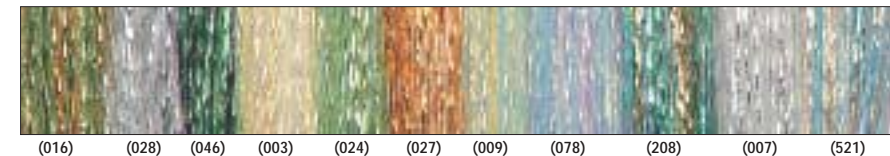
FLASHABOU ACCENT

Individual strands of Flashabou that have been twisted into a permanently spiraled strand. The twist creates optical color illusions and unique light reflections. 12" length.

REGULAR COLORS: Gold (027) Silver (028) Black (001) Chartreuse (004) Green Chartreuse (016)
Pearl (007) Dark Blue (045) Rainbow (078) Hot Orange (021) Olive (024) Hot Pink (010)
Green (009) Red (008)

PEARL COLORS: Chartreuse (004) Green Chartreuse (016)
Hot Orange (021) Olive (024) Hot Pink (010)

Order No. 635-101- Price: \$3.39

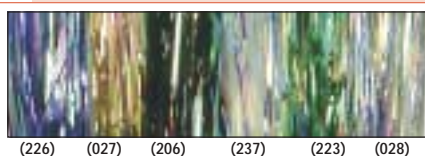


POLAR FLASH

Micro nylon filaments wrap each strand of Flashabou. Perfect for wings, tails, ribbing and bodies. 8" length.

COLORS:
Pearl (007) Rainbow Pearl (078) Yellow Pearl (003) Dk. Olive Pearl (024)
Silver (028) Gold (027) Emerald Rainbow (208) Marine Green (046)
Pale Blue Rainbow (521) Chartreuse (016) Green Pearl (009)

Order No. 635-109- Price: \$3.39

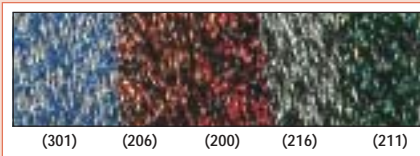


MIRAGE BLEND

A blend of Opal Mirage and Flashabou. Great light reflection and unmatched action in the water. 8" length.

COLORS: Opal/Silver (028) Opal/Gold (027)
Opal/Ice Blue (237) Opal/Green (223)
Opal/Black (206) Opal/Purple (226)

Order No. 635-108- Price: \$4.09



GRIZZLY FLASHABOU ACCENT

Flashabou Accent with two colors on each strand. Grizzly color patterns offer the first true synthetic barred feather. 12" length.

COLORS: Silver/Black (216) Black/Copper (206)
Silver Dk. Blue (301) Black/Red (200)
Black/Red (200) Pearl/Black (211)

Order No. 635-103- Price: \$3.85



MIDGE FLASH

Super small diameter Krystal Flash used for wings and tails. 10" bundle.

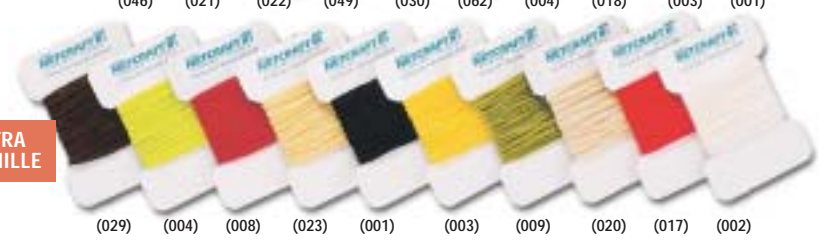
COLORS: Peacock (049) Pink (010) Pearl (007) Tan (020)
Light Blue Dun (031) Flo. Chartreuse (004)

Order No. 650-152- Price: \$3.99/pack

CHENILLE



ULTRA CHENILLE



ULTRA CHENILLE

A very small diameter chenille, about half the size of our "Fine" chenille. 15' per card.

- COLORS:**
 Black (001) White (002) Red (008)
 Tan (020) Yellow (003) Cream (023)
 Flo. Red (017) Dark Brown (029) Caddis Green (009)
 Flo. Chartreuse (004)
Order No. 620-305- Price: \$1.35

TINSEL CHENILLE

Frequently used on jig bodies to add an attracting flash. Medium size, 6' per card. Please specify color.

- COLORS:** Silver (028) Gold (027)
Order No. 630-307- Price: \$1.09



CHENILLE

Full bodied and colorfast. Gives your lures and flies an expert finish quickly and easily. 6' per card.

- COLORS:**
 Black (001) White (002) Red (008)
 Coffee (062) Yellow (003) Blue (030)
 Beige (022) Flo. Red (017) Peacock Green (046)
 Olive (024) Flo. Blue (252) Flo. Green (049)
 Gray (026) Insect Green (009) Flo. Orange (018)
 Purple (006) Fire Orange (021) Tob. Brown (029)
 Flo. Chartreuse (004) Powder Blue (031)
 You may assort colors for quantity price.

Order No.	Size	Quantity	
		1	12
630-300-	Fine	\$.74	\$ 8.04
630-301-	Medium	\$.82	\$ 8.88



TRILOBAL ANTRON CHENILLE

A chenille with very soft fibers and vibrant colors. Used as a body material for all species fly tying. 4 yard pack.

- COLORS:**
 Flo. Fire Orange (021) Flo. Hot Pink (081)
 Flo. Shell Pink (010) Olive (024)
 Hot Orange (018) White (002)
 Flo. Blue (252) Flo. Chartreuse (004)
 Black (001) Dark Olive (074)
Order No. 650-124- Small Price: \$2.09
Order No. 650-125- Medium Price: \$2.09



CACTUS CHENILLE

Great for creating bodies for the ultimate Woolly buggers. Similar to ice chenille with pearlescent colors. 3 yard pack.

- COLORS:**
 Hot Orange (018) Chartreuse (004)
 Pearl (007) Flo. Fuchsia (035)
 Dark Olive (024) Purple (006)
Order No. 650-120- Medium Price: \$3.49
Order No. 650-121- Large Price: \$3.49



BULK CHENILLE

Same colors available as the carded chenille above.

Order No.	Size	Type	Yards	Price
630-302-	Fine	Regular	72	\$ 8.45
630-303-	Medium	Regular	72	10.39
630-309-	Medium	Tinsel	144	30.69



VARIGATED CHENILLE

Used on woolly buggers, also on marabou jigs.

- COLORS:**
 Black/Yellow (206) Black/Orange (276)
 Brown/Yellow (275) Olive/Yellow (277)
Order No. 620-307- Price: \$2.25/15' card



ICE DUBBING CHENILLE

Blended Ice and Antron dubbing creates this sparkling chenille. Ideal for woolly buggers. 3 yard card.

- COLORS:** Peacock (046), Black (001), Shrimp Pink (010), Pearly White (007). Specify color when ordering.
Order No. 650-126- Price: \$2.99



ICE CHENILLE

Medium, 10' per card.

- COLORS:**
 Clear (040) Yellow (003)
 Hot Pink (010) Flo. Orange (018) Olive (024)
 Dark Brown (025) Flo. Chartreuse (004) Red (008)
Order No. 620-306- Price: \$3.29

New!

TUNGSTEN BOMB BEADS



Solid countersunk tungsten eyes are heavier than other comparably sized beads. Easily add weight to your streamer, bass and saltwater flies. 10 beads per pack. Available in Black (001), Gold (027) and Nickel (041).

Order No.	Size Dia.	Price
620-510-	1/16"	\$3.49 10 Pack
620-511-	5/64"	
620-512-	3/32"	
620-513-	7/64"	

New!

PAINTED BEAD CHAIN EYES



Our fluorescent painted bead chain eyes have great colors for salmon, steelhead and bass flies. Bead chain eyes are easy to use, just cut off a pair of eyes and add to your favorite fly. Approx. 1/8" diameter, 12" length.

- COLORS:** Flo. Chartreuse (004) Flo. Pink (010)
 Flo. Red (017) Flo. Orange (018)
Order No. 650-114- Price: \$2.29

CYCLOPS EYES

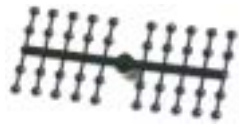


Solid brass beads drilled especially for eyes. Specify color when ordering.

COLORS: Nickel (041) Brass (042)

Order No.	Size	Quantity	
		25 (1 pack)	100 (4 packs)
310-510-	3/32"	\$ 2.48	\$ 8.88
310-511-	1/8"	2.69	9.64
310-512-	5/32"	3.14	11.24
310-513-	3/16"	3.69	13.28

MONO NYMPH EYES



Good eyes for tying nymph and streamer patterns. 20 pack. Black mono eyes are available in X-Small (001), Small (002), Medium (003), Large (004).
Order No. 650-113- Price: \$1.49

HOURGLASS EYES



Precision turned nickel plated solid brass eyes add weight to your streamer, bass and saltwater flies.

Order No.	Size	Length	(1 pack)	(4 packs)
625-200-150	1/60	1/8"	\$2.55	\$9.09
625-200-136	1/36	3/16"	3.15	11.29
625-200-124	1/24	3/16"	4.09	14.75
625-200-116	1/16	1/4"	4.99	18.05

LEAD HOURGLASS EYES



Order No.	Size (oz.)	Length	Price
620-535-180	1/60	1/4"	\$2.69 24 Pack
620-535-160	1/60	1/4"	
620-535-140	1/40	3/32"	
620-535-130	1/30	5/16"	
620-535-120	1/20	3/8"	

STICK-ON & MOLDED EYES!
See page 19

DOLL EYES



White colored eye with a black moveable pupil. Sizes 3mm (003), 4mm (004), and 7mm (007). 36 per pack. Please specify size when ordering.

Order No. 620-505- Price: \$1.49

CONE HEADS



The latest addition to weighted heads. Tapers the head while adding weight. Gold color, 24 per pack. Sizes Small (003), Medium (004), and Large (005). Please specify size when ordering.

Order No. 620-506- Price: \$3.25

New!



PREWAXED UNITHREAD

Made with continuous polyester filaments. Use for tying dry flies and nymphs where minimal thread buildup is desired. 200 yard spools.

COLORS:

Black (001)	White (002)	Red (008)
Yellow (003)	Olive (024)	Lt. Cahill (023)
Dark Brown (029)	Camel (025)	Chartreuse (004)

Order No.	Size	Denier	Each	Per 12
620-160-	6/0	135	\$2.89	\$31.92
620-161-	8/0	72	2.89	31.92



KEVLAR THREAD

Perfect for tying materials that require more tension like deer hair and bucktail. 50 yard spool, size 3/0. Specify color when ordering.

Order No. 240-650- Price: \$2.45 ea.



PREWAXED MONOCORD

This is a flat 3/0 thread that doesn't build up on your hook the way thread does. Makes smoother heads. 100 yard spool. Mix colors for quantity pricing.

COLORS:

Black (001)	Beige (022)	Orange (021)
Olive (024)	Gray (026)	Green (009)
Tobacco Brown (029)	Chartreuse (004)	

Order No.	Each	Per 12
630-601-	\$1.39	\$14.40



PREWAXED THREAD

A very strong 6/0 thread, 200 yard spool.

COLORS:

Black (001)	White (002)	Red (008)
Yellow (003)	Olive (024)	Flo. Orange (018)
Gray (026)	Tobacco Brown (029)	

Order No.	Each	Per 12
630-600-	\$1.35	\$14.04



POLY YARN

Floating material used for bodies. 15' per card. Please specify color when ordering.

COLORS:

White (002)	Black (001)	Gray (026)
Lt. Yellow (036)	Red (008)	
Kelly Green (009)	Orange (021)	

Order No. 620-225- Price: \$1.45



ROUND LEAD WIRE

Used for weighting flies. 6' length. Available in sizes .015" (015), .020" (020), and .025" (025). Specify size.

Order No. 640-707- Price: \$6.69

LEAD TAPE

Used for weighting Zonkers. Self adhesive, 2' x 1".

Order No. 640-708 Price: \$3.35

COPPER WIRE

Used for ribbing. Fine diameter. Available in Copper (043), Olive (024), Pink (010) and Green (009). Please specify color when ordering.

Order No. 620-521- Price: \$1.45

Choosing the Right Thread...

- 6/0 THREAD** - Used on most wet and dry flies.
- 3/0 MONOCORD** - Stronger than 6/0 thread. Use on larger flies requiring more tension.
- JIG THREAD** - Strong thread used for hair jigs.
- KEVLAR THREAD** - Super strong. Used for spinning deer body hair.



JIG TYING THREAD

A very good choice when tying small jigs. About size A Unwaxed, 100 yd. spools.

COLORS:

Black (001)	White (002)	Red (008)
Yellow (003)	Flo. Red (017)	Chartreuse (004)
Flo. Orange (018)	Flo. Green (009)	

Order No.	Each	Per 12
630-607-	\$1.09	\$11.52



RAYON FLOSS

4 strand, 10 yd. spool.

COLORS:

White (002)	Black (001)
Red (008)	Yellow (003)
Orange (021)	Peacock Green (046)
Tobacco Brown (029)	Insect Green (009)

Order No. 630-602- Price: \$8.55



ACETATE FLOSS

Used with acetone to make hard ant bodies. Available in White (002), Black (001), Red (008), Green (009), Pink (010), Orange (021) Yellow (003), Olive (024).

Order No. 630-604- Price: \$7.99

1/2 oz. SOLVENT - Used to melt acetate floss.

Order No. 630-900 Price: \$9.99



ACETATE FLOSS KIT

Just add a few drops of solvent and PRESTO - it turns into firm, strong plastic. Make flies, nymphs, bugs and feathered trebles. Kit includes 4 assorted colors of floss, bottle of solvent, rubber legs, brush and instructions.

Order No. 630-650 Price: \$5.15

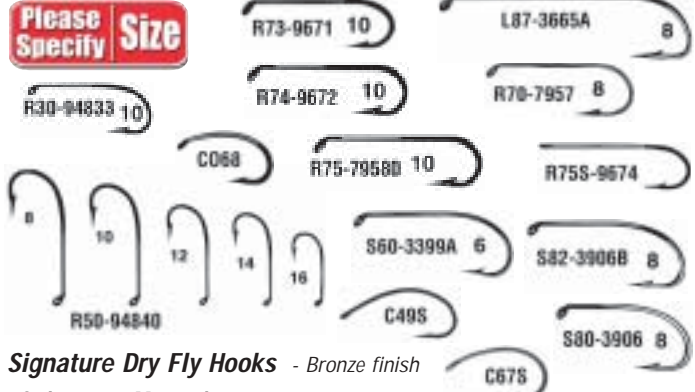


TWO SIDED TINSEL

Used for tails and ribbing on flies. One side is silver, the other side gold. 10 yard spool. Available in Fine (001), Medium (002) and Wide (003).

Order No. 630-610- Price: \$1.09

The most technically advanced fly hooks on the water. Every pattern is specifically designed with consistent gap, bend, wire and shank length for precise scalling. Chemically sharpened needle point with microbarb that can be easily pinched down for barbless applications.



Signature Dry Fly Hooks - Bronze finish

Order No.	Mustad Model	Description	Sizes	Price/Qty.
810-800-	R50-94840	Standard dry	8, 10, 12, 14, 16, 18, 20	\$2.85/25
810-801-	R50-94840	Standard dry	8, 10, 12, 14, 16, 18	\$4.99/50
810-802-	R30-94833	2X-fine wire 94840	8, 10, 12, 14, 16	\$2.85/25

Signature Wet Fly / Nymph Hooks - Bronze finish

810-810-	S60-3399A	1X-heavy	4, 6, 8, 10, 12	\$2.85/25
810-811-	R70-7957	2X-heavy	6, 8, 10, 12	\$2.85/25
810-812-	S80-3906	3X-heavy	6, 8, 10, 12, 14, 16	\$2.85/25
810-813-	S82-3906B	3X-heavy	6, 8, 10, 12	\$2.85/25

Signature Caddis Hooks - Bronze finish

810-820-	C49S	1X-short	10, 12, 14, 16	\$2.85/25
810-821-	C068	2X-short, 2X-heavy	8, 10, 12, 14	\$2.85/25
810-822-	C67S	3X-short, 2X-heavy	6, 8, 10, 12	\$2.85/25

For fly hook styles 3261 and 3399 see page 30.

Signature Streamer Hooks - Bronze finish

810-830-	R73-9671	3X-long, 2X-heavy	6, 8, 10, 12, 14	\$3.69/25
810-831-	R74-9672	4X-long, 2X-heavy	4, 6, 8, 10, 12	\$3.69/25
810-832-	R75S-9674	5X-long, 2X-heavy	4, 6, 8, 10	\$3.69/25
810-833-	R75-79580	5X-long, 2X-heavy	4, 6, 8, 10	\$3.69/25
810-834-	L87-3665A	7X-long, 3X-heavy	2, 4, 6, 8, 10	\$3.69/25



Signature Saltwater Fly Hooks

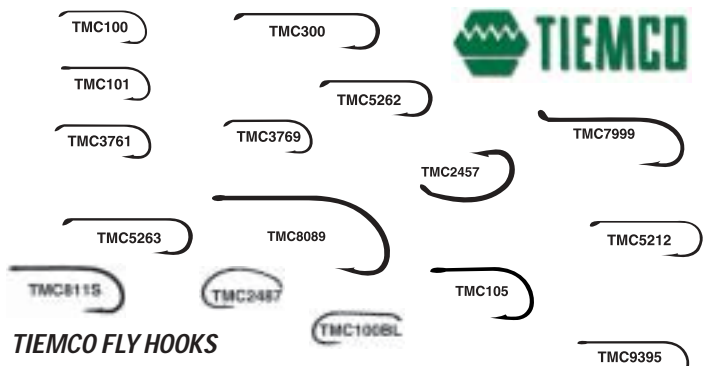
Z-Steel Alloy greatly surpasses stainless steel in both corrosion resistance and strength.

Order No.	Mustad Model	Description	Sizes	Price/Qty.
810-840-	S74SZ-34011	4X-long, 2X-heavy	1, 2, 4, 6	\$5.35/25
810-840-	S74SZ-34011	4X-long, 2X-heavy	1/0, 2/0	\$6.35/25
810-841-	C70SD	2X-heavy	1, 2, 4, 6	\$3.75/25
810-841-	C70SD	2X-heavy	1/0, 2/0, 3/0	\$5.45/25

For saltwater flies, also see our 3407 hook on page 30.



Order No.	Gamakatsu Model	Description	Sizes	Price 25
830-910-	C14S	Egg, Glo bug, black	6, 8, 10, 12	\$4.55
830-911-	S10	Standard dry fly, black	6, 8, 10, 12, 14, 16, 18	\$4.55
830-912-	S10-3F	X fine wire, black	6, 8, 10, 12	\$4.55
830-913-	S10U	Up eye, dry fly, black	8, 10, 12, 14	\$4.55
830-914-	C12	Scud, shrimp, bronze	10, 12, 14, 16	\$4.55
830-915-	S11-4L2H	Streamer, 4XL, 2X strong, bronze	6, 8, 10, 12	\$4.55
830-916-	C12U	Caddis, pupas, bronze	6, 8, 10, 12, 14	\$4.55



TIEMCO FLY HOOKS

Tiemco has become a world-wide leader by revolutionizing the design and manufacture of fly hooks. Tiemco hook styles let flies look more life-like and processes such as chemical sharpening improve hook performance.

New Models!

Dry Fly Hooks - Bronze finish

Order No.	Tiemco Model	Description	Sizes	Price 25
812-100-	TMC100	Down Eye, 1X-fine	8, 10, 12, 14, 16, 18, 20	\$4.45
812-104-	TMC100BL	Barbless, 1X-fine	10, 12, 14, 16	\$4.45
812-102-	TMC101	Straight Eye, 1X-fine	10, 12, 14, 16, 18, 20	\$4.49

Bass Bug Hooks - 8089 -Bronze finish, 811S Stainless Steel

812-101-	TMC8089	Straight Eye, fine	2	\$7.39
812-101-	TMC8089	Straight Eye, fine	6	\$6.99
812-101-	TMC8089	Straight Eye, fine	10	\$5.95
812-105-	TMC811S	Straight Eye, X-heavy	1, 2	\$13.89
812-105-	TMC811S	Straight Eye, X-heavy	1/0, 2/0, 3/0, 4/0	\$15.65

Wet Fly/Nymph/Egg Hooks - Bronze finish

812-109-	TMC105	Egg, Glo Bug, 5X-short	6, 8, 10	\$5.69
812-111-	TMC3761	X-long, Heavy wire	6, 8, 10, 12, 14, 16	\$4.75
812-114-	TMC5262	2X long, 2X wire	4, 6, 8, 10	\$5.89
812-112-	TMC5263	3X-long, 2X wire	2, 4, 6, 8, 10	\$5.89
812-103-	TMC5212	Hopper, Caddis, Stone Fly	6, 8, 10, 12	\$4.49
812-113-	TMC3769	2X wire, Nymphs, Wets	6, 8, 10, 12, 14, 16	\$4.49

Shrimp/Caddis Hooks - Bronze finish

812-110-	TMC2457	2X-wide, 2X-short, 2X-heavy	6, 8, 10, 12, 14	\$5.49
812-106-	TMC2487	2X-wide, 2X-short, fine	10, 12, 14, 16, 18	\$4.45

Streamer Hooks - Bronze finish

812-120-	TMC300	6X-long, Heavy Wire	2, 4, 6, 8, 10	\$5.95
812-121-	TMC9395	4X-long, 3X wire	2, 4, 6, 8	\$6.49

Steelhead/Salmon Hooks - Black finish

812-123-	TMC7999	Forged, Up eye	6, 4, 2, 1/0	\$10.65
----------	---------	----------------	--------------	---------



DAIICHI FLY HOOKS

Daiichi is known worldwide as the sharpest, strongest fly hook available. Only the finest hardened and tempered high carbon steel is used to make Daiichi hooks. The constant taper ground needle point assures strength and amazing speed of penetration. The low profile barb results in less broken hooks and lost fish. Bronze finish.

Order No.	Daiichi Model	Description	Sizes	Price 25
861-401-	D1130	Wide gap, 1X fine, short	10, 12, 14, 16	\$5.69
861-402-	D1150	Wide gap, 1X heavy, up eye	8, 10, 12, 14	\$5.99
861-403-	D1180	Standard Dry Fly	8, 10, 12, 14	\$5.99
861-404-	D1560	Straight Eye, fine	6, 8, 10, 12	\$5.65
861-405-	D2220	4X long streamer	4, 6, 8, 10, 12	\$5.95
861-406-	DX510	Steelhead, egg	4, 6, 8, 10	\$8.09
861-400-	D2720	Wide gap Stinger	2, 1/0	\$5.15/15 pk.



Extra Select CRAFT FUR

Longer more supple hair for tying streamers and jigs. 5" x 5" patch.

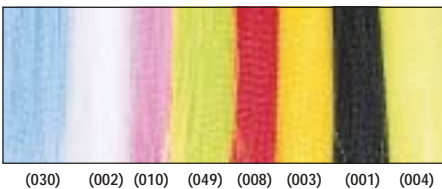
- COLORS:**
 Black (001) Purple (006)
 Flo. Blue (252) Flo. Orange (018)
 Chartreuse (004) White (002)
 Bright Green (009) Flo. Yellow (019)
Order No. 650-140- Price: \$2.19



FISHAIR

Bright, consistent colors convince many to use this synthetic material in place of bucktail. Use for tying streamers, jigs, and trebles. Comes in easy-to-use snap apart bundles. 2 1/2" length.

- COLORS:**
 Black (001) White (002) Flo. Chartreuse (016)
 Orange (018) Flo. Lime (049) Flo. Pink (010)
 Flo. Yellow (019) Feather Red (008)
Order No. 675-100-... Price: \$4.22/1 oz.
Mix colors \$14.88/4 pks.



CRIMPED NYLON

Used primarily as a dressing on saltwater jigs and flies but also shows up on plenty of big freshwater jigs. 8" length, 2 oz. pack. Mix colors for quantity price.

- COLORS:**
 Black (001) White (002) Blue (030) Lime (049)
 Pink (010) Red (008) Yellow (003) Chart. (004)
Order No. 625-100-..... Price: \$2.79/pack
\$9.96/4 pks.



POLY YARN STRIKE INDICATORS

These poly yarn strike indicators are treated to shed water and ready to attach onto your leader. No sticky tape to foul up your leader. Available in White (002) and Yellow (003). Please specify color when ordering.
Order No. 650-194- Price: \$3.99/4 pack



PROFESSIONAL SERIES FLOATING FLY LINES

An excellent general purpose line for all weather conditions. Optimal line density for high floatation. 85' length. Mist green finish. Please specify size when ordering.

Weight Forward Line Weights

Line #	Size Code	Line #	Size Code
WF-4-F	(004)	WF-5-F	(005)
WF-6-F	(006)	WF-7-F	(007)
WF-8-F	(008)		

Order No. 775-115- Price: \$39.95

Double Taper Line Weights

Line #	Size Code	Line #	Size Code
DT-4-F	(004)	DT-5-F	(005)
DT-6-F	(006)		

Order No. 775-116- Price: \$39.95



AIR CEL FLOATING FLY LINES

The original floating line with improvements made over the years. Durable, functional and an excellent value. 82' length. Light green finish. Specify size when ordering.

Weight Forward Line Weights

Line #	Size Code	Line #	Size Code
WF-5-F	(005)	WF-6-F	(006)
WF-7-F	(007)	WF-8-F	(008)
WF-9-F	(009)		

Order No. 775-140- Price: \$24.95

Double Taper Line Weights

Line #	Size Code	Line #	Size Code
DT-5-F	(005)	DT-6-F	(006)
DT-7-F	(007)	DT-8-F	(008)

Order No. 775-150- Price: \$24.95



333+ FLOATING FLY LINES

Floating fly line with a silky smooth finish for casting performance and durability. 84' length. Please specify size when ordering.

Rocket Taper Weight Forward Lines - Green

Line #	Size Code	Line #	Size Code
WF-3-F	(003)	WF-4-F	(004)
WF-5-F	(005)	WF-6-F	(006)
WF-7-F	(007)	WF-8-F	(008)
WF-9-F	(009)	WF-10-F	(010)

Order No. 778-101- Price: \$25.95

Double Taper Line Weights - Green

Line #	Size Code	Line #	Size Code
DT-3-F	(003)	DT-4-F	(004)
DT-5-F	(005)	DT-6-F	(006)
DT-7-F	(007)	DT-8-F	(008)

Order No. 778-102- Price: \$25.95



PREMIUM LEADERS

Scientifically formulated blend of nylon polymers produces leaders with higher knot strength, high abrasion resistance and high strength to diameter ratios. These leaders have the perfect blend of stiffness and flexibility to turn over flies and allow a natural drift.

9' TROUT/PANFISH LEADERS with LOOP

Tippet Size	# Dia.	Test	Order Code	Tippet Size	# Dia.	Test	Order Code
3X	.007	6	(003)	4X	.007	5	(004)
5X	.006	4	(005)	6X	.005	3	(006)

Order No. 775-705- Price: \$3.59

8' PREMIUM BASS LEADERS with LOOP

Heavy butt section specifically for turning over large bass bugs and poppers. Improved clear polymer formula.

Order Code	Lb. Test	Tippet Dia.	Butt Dia.
(008)	8	.009"	.026"
(010)	10	.011"	.026"
(012)	12	.012"	.026"

Order No. 775-707- Price: \$3.79

FRESHWATER TIPPET MATERIAL

Improved premium clear polymer. Low memory and high abrasion resistance. 25 meter spool.

Tippet Size	# Dia.	Test	Order Code	Tippet Size	# Dia.	Test	Order Code
3X	.007	6	(003)	4X	.007	5	(004)
5X	.006	4	(005)	6X	.005	3	(006)

Order No. 775-710- Price: \$3.59

FLY LINE BACKING

A smooth, ultra thin, braided dacron line that has no stretch and is waterproof. High visibility orange color.

Order No.	Length	# Test	Price
775-722	250 yd.	20	19.95
775-721	250 yd.	30	21.95



FLUOROCARBON LEADER MATERIAL

Tough, durable and virtually invisible. Low stretch provides superior sensitivity. 50 yard spool, Available in lb. test 4(004), 6(006), 8(008), and 10 (010). Please specify size when ordering.

Order No. 725-400- Price: \$6.69

FOLDING SCISSORS

The blades on these first quality scissors fold into handle for compact safe storage. Stainless steel blades.

Order No. 750-218 Price: \$8.99



climax

New!



FRESHWATER LEADERS

Climax leaders are designed with a stiff butt section to transfer your casting energy progressively down the length of the leader. They deliver a quick powerful turnover and a delicate presentation. Made with abrasion resistant yet supple co-polymer materials. Climax leaders are specifically designed for different fish species and conditions.

7.5' TROUT LEADER SIZES - 0X (000), 1X(001), 2X (002), 3X (003), 4X (004), 5X(005)
Order No. 778-110-Price: \$3.75

9' TROUT LEADER SIZES - 0X (000), 1X (001), 2X (002), 3X (003), 4X (004), 5X(005)
Order No. 778-111-Price: \$3.75

7.5' NYMPH LEADER SIZES 0X (000), 1X(001), 2X (002), 3X (003), 4X (004), 5X(005)
Order No. 778-112-Price: \$3.75

9' BASS LEADER SIZES
 Lb. test - 6 (006), 8 (008), 10(010), 15 (015)
Order No. 778-113-Price: \$3.75

9' SALMON/STEELHEAD LEADER SIZES
 Lb. test - 6 (006), 8 (008), 10(010), 15 (015)
Order No. 778-114-Price: \$3.75



STACK PACK

Provides compact storage for all of your small lures, materials etc.. 2" diameter. 6 clear containers per stack.
Order No. 305-700 Price: \$2.59

GLIDE LINE DRESSING

Improves the castability of your line and keeps it floating high. Can be used with all types of fly lines. Dries with a hard slick finish that doesn't hold unwanted debris. 1 oz. bottle.



Order No. 685-500 Price: \$6.75

SHIMAZAKI DRY SHAKE

For high floating performance, place your dry fly in the container, give it a shake and it's ready to fish. 25 gram pack.



Order No. 685-502 Price: \$8.95

DAVE'S BUG FLOTE

Keeps flies floating high. Won't discolor hair or hackle. 1 oz. size. Comes in handy applicator bottle that attaches easily to vest.



Order No. 685-501 Price: \$5.15

New!



DELUXE FISHING VEST

A sharp looking 100% poplin vest that has proven itself time and time again as an indispensable tool for fly fishermen. Fourteen Velcro and zippered pockets. Available in Large (001), XL (002), and XXL (003).

Order No. 778-190- Price: \$39.95



CANVAS CREEL

Waterproof canvas creel. Instantly pops open. Comes with shoulder strap. 14" length.

Order No. 752-100 Price: \$11.35



PIN ON REEL

Pin the reel on your vest and attach your nippers or other small tools. Metal case, nylon lanyard.

Order No. 420-421 Price: \$3.69



SCISSOR PLIERS

A useful tool for your vest or tackle box. Jaws are both scissors and pliers. Perfect for cutting line, removing hooks, etc.. 5" length.

Order No. 420-454 Price: \$4.59



NIPPERS

Allows you to cut tippets off close to the knot.

Order No. 420-455 Price: \$2.29



NYLON LINE CONNECTORS

Lock line to leader without knots. Size 1 takes 1 to 50#, size 2; 10 to 75#. 4 connectors per pack. Please specify size 1 (001), or 2 (002) when ordering.

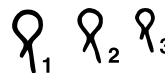
Order No. 710-650- Price: \$1.35



NO KNOT EYELETS

Insert the barbed shank into your fly line and it locks firmly into the core. Now tie your leader to the eyelet. It's that simple and no bulky knots. Contains 2 large and 2 small for #6, 7, 8, and 9 lines.

Order No. 810-995 Price: \$1.65



SNAP HOOKS

Allows you to change flies quickly and easily. Bronzed, ringed eye. Available in sizes 1 (001), 2(002), and 3 (003). 20 per pack.

Order No. 810-960- Price: \$3.39

PFLUEGER
QUALITY SINCE 1881

For over 120 years, Pflueger has provided quality crafted fishing tackle. Pflueger delivers performance, value and tradition.



Trion
FLY REELS

This is a feature packed large arbor reel. Machined and anodized aluminum frame and spool. Oversize ball bearing. One-way clutch bearing. Patented center-disc drag system. Easy release spool switch. Convertible left/right hand retrieve.

Order No.	Line Wt.	Reel Wt.	Backing Cap.	Price
204-433	2,3,4	5.9 oz.	60 yds./20#	\$129.95
204-434	5,6	6.1 oz.	70 yds./20#	129.95
204-435	7,8	6.6 oz.	120yds./20#	129.95

PFLUEGER
Medalist



FLY REELS

Features aluminum alloy frame and spool with non-reflective black finish. Exposed rim control spool with counterbalance for additional control. Externally mounted adjustable drag. Convertible for right to left hand retrieve.

Order No.	Line Wgt.	Reel Wgt.	Backing Cap.	Price
204-403	Up to 7	6.2	50 yds.	\$30.69
204-404	Up to 8	6.6	60 yds.	30.69
204-405	Up to 10	7.1	60 yds.	30.69



STH MR FLY REELS

Unique cassette design eliminates spare spools. Lines can be easily changed by swapping plastic cassettes. Completely covered cork/brass disc drag system insures a smooth drag. Ventilated aluminum frame is coated with a high impact, black low glare finish that withstands wear. Easily converts from right to left hand use. Manufacturer limited lifetime warranty. Includes 2 cassettes.

Order No.	Line Wgt.	Spool Dia.	Backing Capacity	Price
208-105	4,5,6	3"	100yds.	\$80.95
208-106	6,7,8	3 3/8"	120yds.	80.95
208-107	8,9,10	3 3/4"	260yds.	80.95

Extra Cassettes for STH MR Cassette Reels - Specify size 4,5,6 (456), 6,7,8 (678), 8,9,10 (891).
Order No. 208-201-Price: \$9.95



SUEDE FLY REEL CASE

Suede leather case is fleece lined to protect your favorite fly reels. 4" diameter.

Order No. 420-531 Price: \$8.39

FLY FISHING

JANNS
NETCRAFT